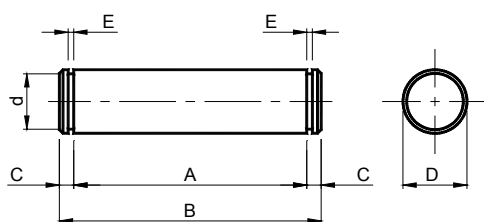
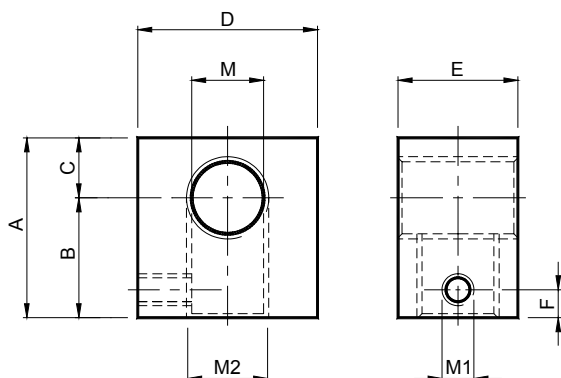


Tipo: **PERNI** – Type: **PINS**

MATERIALI Acciaio
TRATTAMENTI Zincatura

MATERIALS Steel
TREATMENTS Electrolytic zinc plated

Tipo Type	Cod. N°	A	B	C	ØD	Ød	E	Peso Weight in Kg
LA10	TB001629	30 ^{+0.3} / _{+0.0}	39	4.5	16	15.2	1.1	0.060
LA11	TB001630	35 ^{+0.3} / _{+0.0}	44	4.5	16	15.2	1.1	0.068
LA12	TB001631	51 ^{+0.3} / _{+0.0}	60	4.5	16	15.2	1.1	0.093
LA13	TB001632	56 ^{+0.3} / _{+0.0}	65	4.5	16	15.2	1.1	0.101
LA14	TB001633	73 ^{+0.3} / _{+0.0}	80	3.5	16	15.2	1.1	0.124
LA15	TB001634	35 ^{+0.3} / _{+0.0}	45	5	20	19	1.3	0.109
LA16	TB001635	67.5 ^{+0.3} / _{+0.0}	77.5	5	20	19	1.3	0.188
LA17	TB001636	105 ^{+0.3} / _{+0.0}	115	5	20	19	1.3	0.277
PF110	AR004730	51.3 ^{+0.3} / _{+0.0}	60	4.35	8	7.6	0.9	0.023
PF120/30	AR004731	58.5 ^{+0.3} / _{+0.0}	68	4.75	10	9.6	1.1	0.040
PF140	AR004732	75.5 ^{+0.3} / _{+0.0}	85	4.75	20	19	1.3	0.206
PF150	AR004733	111.5 ^{+0.3} / _{+0.0}	121.5	5	30	28.6	1.6	0.663
PF160	AR004734	157 ^{±0.10}	167	5	30	28.6	1.6	0.916
PF140/P	AR004735	75.5 ^{+0.3} / _{+0.0}	85	4.75	12	11.5	1.1	0.074
PF150/P	AR004736	111.5 ^{+0.3} / _{+0.0}	121.5	5	20	19	1.3	0.295
PF160/P	AR004737	157 ^{±0.10}	167	5	20	19	1.3	0.405

 Tipo: **PIASTRINA PI** / Type: **PLATE PI**


Tipo Type	Cod. N°	A	B	C	D	E	F	M	M1	M2	Peso Weight in Kg
PI10 M8	AR070576	30	20	10	20	15	7	M8	M8	M ₁₀	0.053
PI10/20/30 M10	AR070578	30	20	10	20	15	7	M10	M8	M10	0.051
PI10/20/30 M16	AR070582	30	20	10	30	15	7	M16	M8	M10	0.073
PI40 M12	AR070584	35	22.5	12.5	30	20	7	M12	M8	M14	0.125
PI40 M16	AR070586	35	22.5	12.5	30	20	7	M16	M8	M14	0.115
PI50 M16	AR070588	45	30	15	45	30	7	M16	M8	M20	0.369
PI50 M20	AR070590	45	30	15	45	30	7	M20	M8	M20	0.354
PI60 M20	AR070592	50	35	15	50	35	10	M20	M8	M24	0.513

MATERIALI Acciaio
TRATTAMENTI Zincatura

MATERIALS Steel
TREATMENTS Electrolytic zinc plated