

C196

SOLID CONTROL HANDWHEEL



Materials:

Reinforced and stabilized polyamide.
Resistant to oils and greases.

Surface finish:

Satin.

Colour:

Black (RAL 9011).

Central cap:

Grey polyamide (RAL 7035 code 13).

Alternative cap colours:

Orange (RAL 2004 cod. 02).
Blue (RAL 5015 cod. 07).
Yellow (RAL 1021 cod. 10).
Red (RAL 3000 cod. 16).
Green (RAL 6024 cod. 17).
Black (RAL 9011 cod. 01).

Main insert:

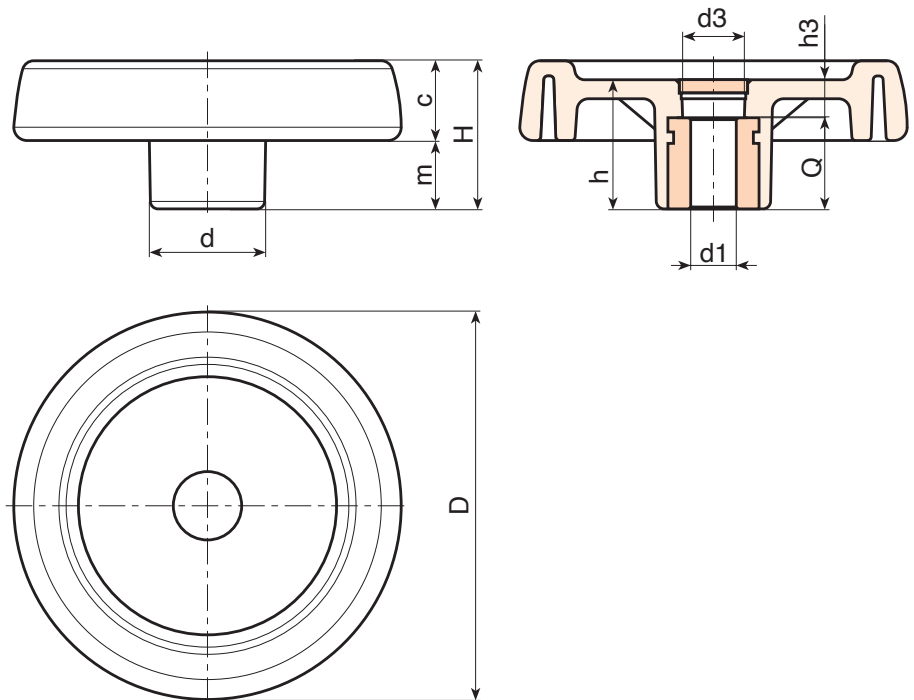
Galvanised steel insert with smooth through bore (tolerance H10).

Fixing method:

For fixing systems, or execution of keyways or square holes, please refer to the technical notes attached to the catalogue [page 814].

Special requests:

- On request and with a minimum of 50 pieces, the inserts can be supplied with the hole d_1 with H7 tolerance and black-oxide finish. Add the letters ZB to the standard code. Example: C196100.TD1001PZB.
- Upon request and for special quantities inserts can be supplied with custom hole diameter d_1 .
- Upon request and for special quantities inserts can be supplied in different materials/with different coatings.
- Upon request and for special quantities handwheels and caps are available in the colours indicated in the chart (attention: reduced range) [page 807].



🛒	Art.	D	H	h	d	m	c	d3	h3	Dm	d1 _{H10}	Q	g
●	C196080.TP0501P	81	33	29	25	16	17	16	9	12	5	20	100
●	C196080.TD0801P	81	33	29	25	16	17	16	9	12	8	20	99
●	C196080.TD1001P	81	33	29	25	16	17	16	9	12	10	20	99
●	C196080.TD1201P	81	33	29	25	16	17	16	9	12	12	20	98
●	C196100.TP0501P	100	39	34	30	18.5	20.5	16	10	16	5	24	192
●	C196125.TP0501P	125	44	37	36	20	24	26	13	18	5	24	295
●	C196125.TD1201P	125	44	37	36	20	24	26	13	18	12	24	290
●	C196150.TD0801P	150	54	44	38	25	29	26	12	22	8	32	520
●	C196150.TD1401P	150	54	44	38	25	29	26	12	22	14	32	515
●	C196175.TD0801P	173	57	47	40	25.5	31.5	26	15	22	8	32	660
●	C196200.TD0801P	202	59	49	44	24	35	27	13	28	8	36	870
●	C196250.TD0801P	249	68	58	59	29	39	36	22	28	8	36	1420

Attention: For a minimum of 50 pieces the diameter d_1 can be customised (hole tolerance H10 galvanised and H7 black-oxide treated).
Dm = Maximum obtainable diameter for subsequent machining (widening).



Stock availability as % (🛒)
90% (●) - 40% (●) - 5% (●)