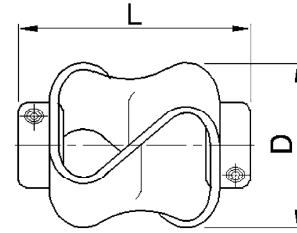
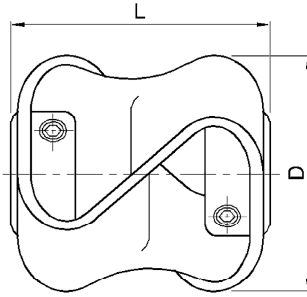


# Flex-P

## Double Loop Flexible Coupling



### DIMENSIONS & ORDER CODES

Size	Steel screws	Stainless steel screws	Dimensions					Fasteners		
	Order Code		Max Diameter mm	Length L +/- 1.0 mm	Bore length mm	Max Bores mm	Mass kg x 10-3	Size	Torque Nm	A/F mm
10	047.10	-	27	27	7.9	9.53	25	M3	0.9	1.5
	-	049.10							0.3	
20	047.20	-	48	48	12.7	12.7	92	M4	2.2	2.0
	-	049.20							2.0	
30	047.30	-	54	55	16.0	16.0	124	M5	4.6	2.5
	-	049.30							2.1	
40	047.40	-	56	56	16.0	16.0	136	M6	7.6	3.0
	-	049.40							3.7	

### PERFORMANCE

Size	Max Torque 1 Nm	Max Torque 2 Nm	max misalignment/displacement		
			Angular deg	Radial mm	Axial +/- mm
10	0.5	0.8	10	2.6	4.5
20	1.8	3	15	3.2	7.5
30	5	8	15	3.2	8.5
40	10	18	15	3.2	11

Torque 1 = torque at maximum displacement

Torque 2 = torque at 1 deg. angular, 2mm axial and 0.5mm radial displacement

### Materials & Finishes

**Hubs:** Stainless Steel 304 [1.4301] natural finish  
**Flexing Element:** Hytrel  
**Fastener:** 047 Type: Alloy steel, black oiled  
 049 Type: Stainless steel

### Temperature Range

-40°C to +100°C

### Maximum Rotational Speed

3000 rev/min

### STANDARD BORES\*

Size	ØB1, ØB2 +0.05mm/-0mm (+0.002/-0)																
	3	(1/8")	4	(3/16")	5	6	(1/4")	(5/16")	8	(3/8")	10	12	(1/2")	14	15	(5/8")	16
10	•	•	•	•	•	•	•	•	•	•							
20						•	•	•	•	•	•	S	S				
30										•	•	•	•	S	S	S	S
40										•	•	•	•	S	S	S	S
<b>Bore Ref</b>	14	16	18	19	20	22	24	27	28	31	32	35	36	38	40	41	42

\* Couplings with dissimilar bores are non-standard

S = Plain bore only, keyway not permissible size 10