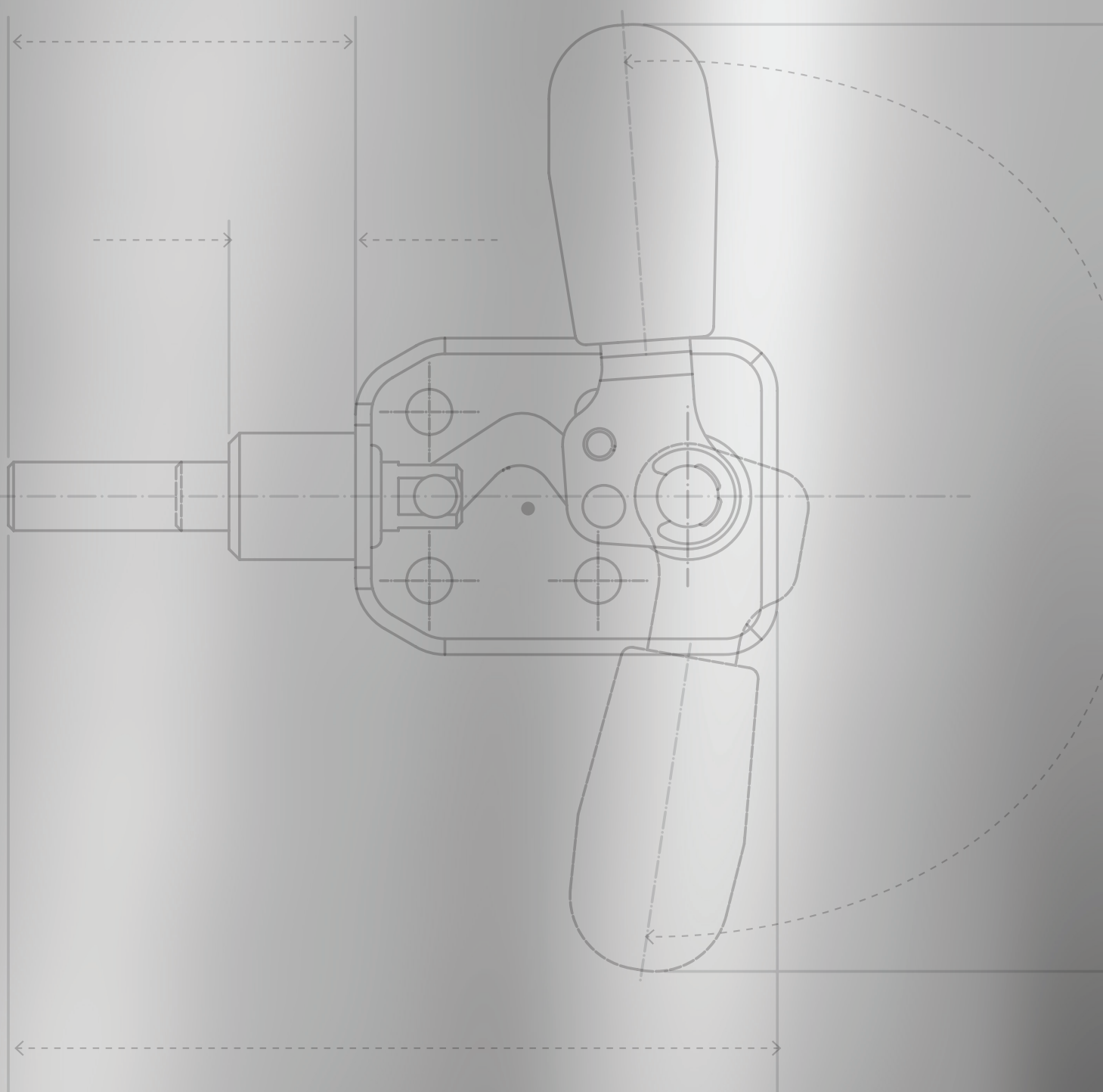


STRAIGHT-LINE ACTION SERIES

STRAIGHT-LINE



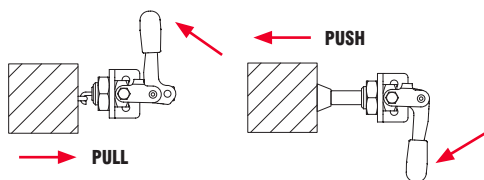
Here you can download
2D and 3D CAD drawings
of all products.



In the tools of this family, the circular movement of the control lever is transformed into the linear movement of the push rod. Some models can work and lock with both thrust and traction, others can only work with thrust.

LIGHT SERIES: It has holding forces from 80 to 720 daN. They are available in galvanized steel and stainless steel. The main feature of the ASD/ASS models is the low point of application of force as well as the very small vertical footprint. For models 80-165-340/AS there is the possibility of front mounting with an external thread that allows the rotation of the control lever in the most favourable position for use. The fixing bracket on the table increases the possibilities of use.

HEAVY-DUTY SERIES: It has holding forces from 120 to 4500 daN. The base body is made of hot forged ASTM A105 steel with a manganese phosphate finish for all sizes. Riveted Pins are available for sizes 70-160-360. Pins with support bushings hardened by cementation for the other sizes. Push rod and control lever in galvanized steel.



AS - ASX

PUSH AND PULL ROD TOGGLE CLAMPS

Control lever, riveted pivots, bushing fixing screws and ring nut:

Galvanized steel (AS), **AISI 304 stainless steel** (ASX).

Sliding bushing and push-pull rod:

Galvanized steel (AS), **AISI 303 stainless steel** (ASX). Rod with threaded hole for the spindle housing (to be ordered separately - see Accessories).

Handle:

Red polyurethane; resistant to oils, greases and other chemical agents.

Features and applications:

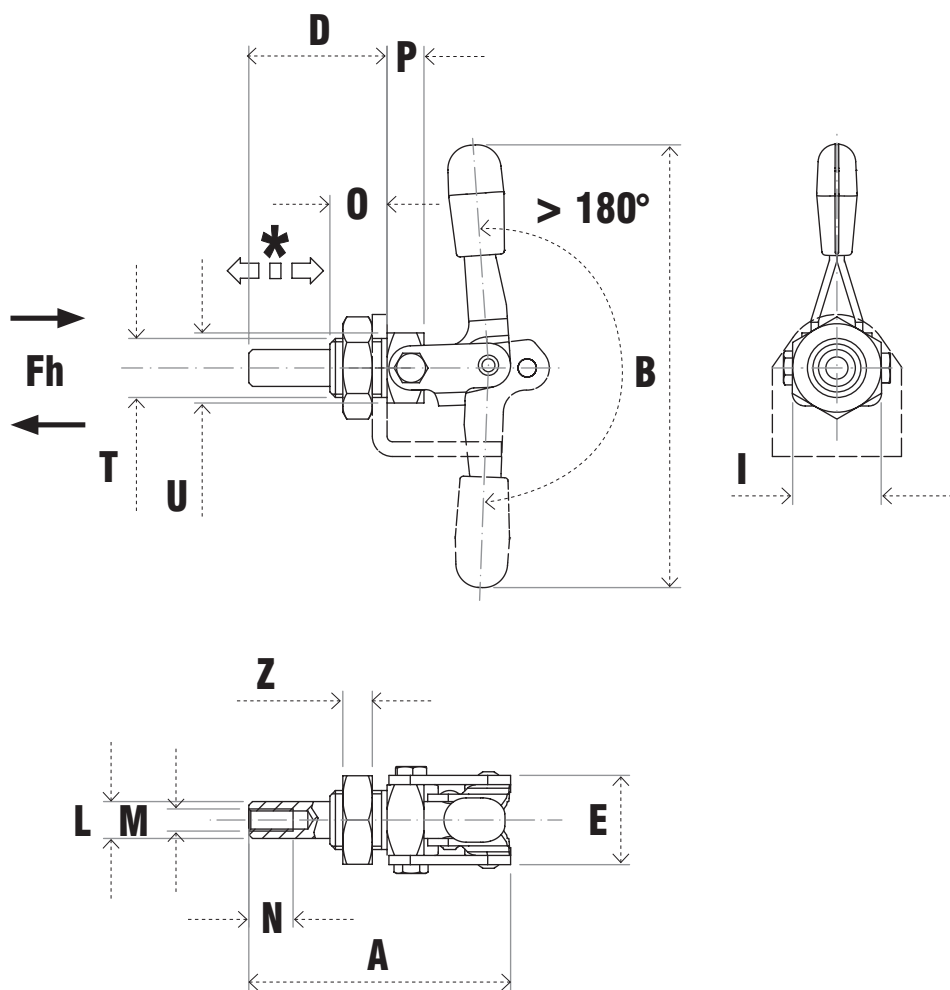
The tools of this series can work with both push and traction.


A special grease is applied on the contact surfaces to reduce friction and make the movement more fluid.

Accessories (to be ordered separately):


- Fixing brackets (see page 144).
- Spindles (see page 152).





Code	Description	A	B	D	E	I	L	M	N	O	P	T	U	Z	*	Fh (daN)	Gr. 
AG401	80/AS	71	120	38	24	24	10	M6	12	15.5	10	M16X1.5	10	8	21	300	135
AG406	165/AS	113	194	59	28	30	12	M8	15	20	16	M20X1.5	22	9	38	540	335
AG411	340/AS	173	256	90	38	36	16	M10	18	22	28	M24X2	30	10	66	700	835



Code	Description	A	B	D	E	I	L	M	N	O	P	T	U	Z	*	Fh (daN)	Gr. 
AS401	80/ASX	71	120	38	24	24	10	M6	12	15.5	10	M16X1.5	10	8	21	300	135
AS406	165/ASX	113	194	59	28	30	12	M8	15	20	16	M20X1.5	22	9	38	540	335
AS411	340/ASX	173	256	90	38	36	16	M10	18	22	28	M24X2	30	10	66	700	835

