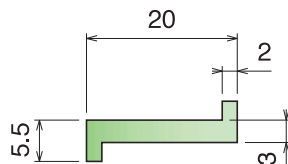
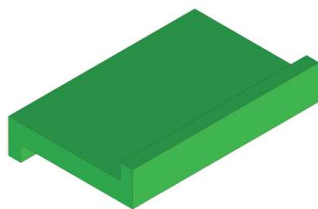


Material:

Polyethylene UHMW-PE with molecular density 5,600,000 g/mol
 Linear expansion coefficient: $1.1 \times 10^{-4} \text{ } ^\circ\text{F}^{-1}$ ($2 \times 10^{-4} \text{ } ^\circ\text{C}^{-1}$)
 Operating temperature: -40 to 176°F (-40 to +80°C)

101 Profilo "Z" Z-Profile / Z-Profil

On request available in white color

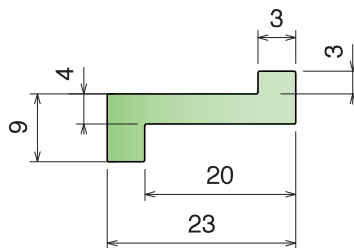
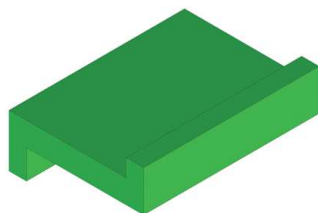


Part	Article-Nr.	Colour	Availability
101	10101	black	Stock item
101	10102	green	Stock item

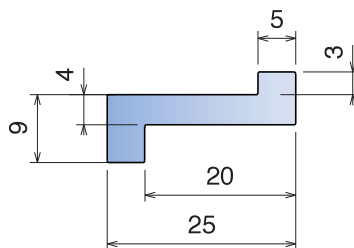
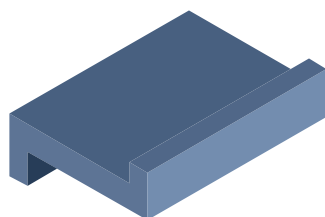


102 Profilo "Z" rinforzato Z-Profile reinforced / Z-Profil, verstärkt

On request available in white color



Part	Article-Nr.	Colour	Availability
102	10201	black	Stock item
102	10202	green	Stock item



Part	Article-Nr.	Colour	Availability
102	10299B	BluLub	Stock item

