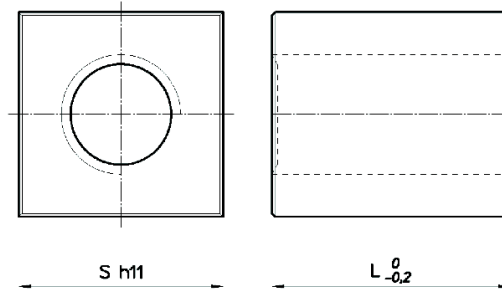
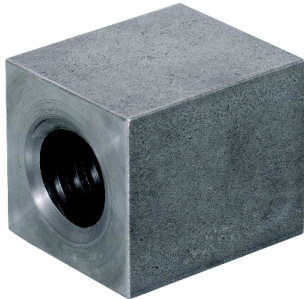


KOCKA ACÉL ANYA SQUARE STEEL NUT



| | |
|------------------------------------|--|
| Anyag Material | acél steel |
| Hegeszthetőség Weldable | csak MIG-MAG hegesztés only MIG-MAG welding |
| Típus Type | CQA (79.018) |

| Cikkszám Code | | Ø x emelkedés Ø x lead | Bekezd. Thread starts | S mm | L mm | Tömeg Weight (kg) | At* mm ² |
|------------------|-------------|---------------------------|--------------------------|---------|---------|-------------------------|------------------------|
| jobb right | bal left | | | | | | |
| 79.018.009 | 79.018.007 | Tr 10x2 | 1 | 17 | 15 | 0,027 | 150 |
| 79.018.014 | 79.018.011 | Tr 12x3 | 1 | 25 | 30 | 0,123 | 616 |
| 79.018.032 | 79.018.029 | Tr 14x3 | 1 | 25 | 20 | 0,230 | 658 |
| 79.018.023 | 79.018.020 | Tr 14x4 | 1 | 30 | 35 | 0,211 | 658 |
| 79.018.038 | 79.018.035 | Tr 16x4 | 1 | 30 | 35 | 0,199 | 770 |
| 79.018.047 | 79.018.044 | Tr 18x4 | 1 | 35 | 45 | 0,353 | 1131 |
| 79.018.056 | 79.018.053 | Tr 20x4 | 1 | 40 | 50 | 0,517 | 1412 |
| 79.018.086 | 79.018.083 | Tr 25x5 | 1 | 45 | 55 | 0,683 | 1943 |
| 79.018.135 | 79.018.132 | Tr 30x6 | 1 | 50 | 60 | 0,877 | 2544 |
| 79.018.174 | 79.018.171 | Tr 35x6 | 1 | 60 | 70 | 1,494 | 3517 |
| 79.018.183 | 79.018.180 | Tr 36x6 | 1 | 60 | 70 | 1,465 | 3630 |
| 79.018.210 | 79.018.207 | Tr 40x7 | 1 | 60 | 70 | 1,347 | 4013 |
| 79.018.261 | 79.018.258 | Tr 50x8 | 1 | 70 | 90 | 2,183 | 6502 |
| 79.018.273 | 79.018.270 | Tr 60x9 | 1 | 80 | 100 | 2,990 | 8718 |

* Az orsó és az anya közötti érintkezési felület Contact surface between the screw and nut