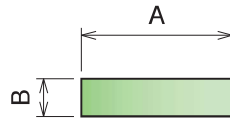
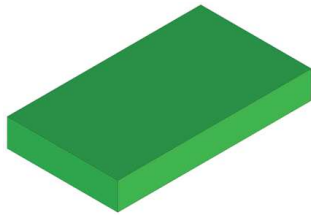


Material:

Polyethylene UHMW-PE with molecular density 5,600,000 g/mol
 Linear expansion coefficient: $1.1 \times 10^{-4} \text{ } ^\circ\text{F}^{-1}$ ($2 \times 10^{-4} \text{ } ^\circ\text{C}^{-1}$)
 Operating temperature: -40 to 176°F (-40 to +80°C)

105 Profilo piatto Flat profile / Flachprofil

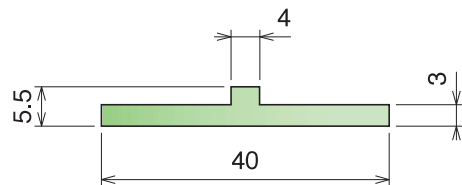
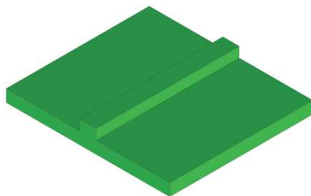
On request available in white color



Part	Article-Nr.	A	B	Colour	Availability
105	10501	20	3	black	Stock item
105	10502	20	3	green	Stock item
105	10503	20	5	black	Stock item
105	10504	20	5	green	Stock item
105	10595	25	3	green	Stock item
105	10592	30	3	green	On request
105	10594	30	5	green	On request
105	10596	40	3	green	Stock item
105	10597	50	3	green	On request
105	10505	60	3	black	Stock item
105	10506	60	3	green	Stock item
105	10507	70	3	black	Stock item
105	10508	70	3	green	Stock item
105	10509	100	3	black	On request
105	10510	100	3	green	Stock item

106 Profilo guida catena Flat profile with nose / Flachprofil mit Nase

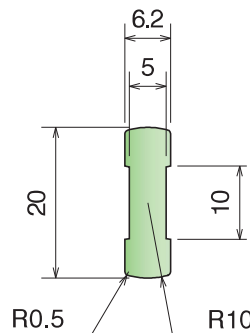
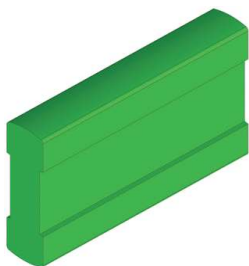
On request available in white color



Part	Article-Nr.	Colour	Availability
106	10601	black	Stock item
106	10602	green	Stock item

107 Profilo guida catena Wear strip / Rückführleiste

On request available in white color



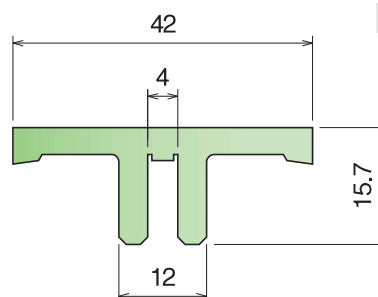
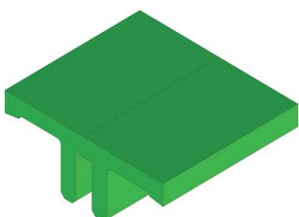
Supports Available:
PART 230-231
Pag 332



Part	Article-Nr.	Colour	Availability
107	10701	black	Stock item
107	10702	green	Stock item

108 Profilo T T-profile / T-Profil

On request available in white color | Fit on 4 mm



Part	Article-Nr.	L	Colour	Availability
108	10801C	3 m	black	Stock item
108	10801	6 m	black	On request
108	10802C	3 m	green	Stock item
108	10802	6 m	green	On request