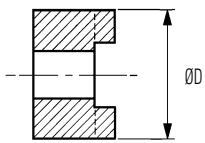
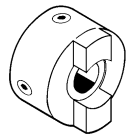


Aluminium Thro' Hubs



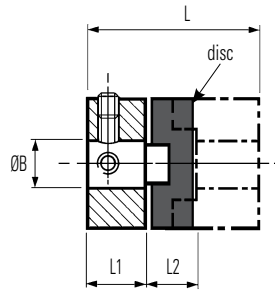
Thro' bores allow disc replacement without disturbing shaft alignment



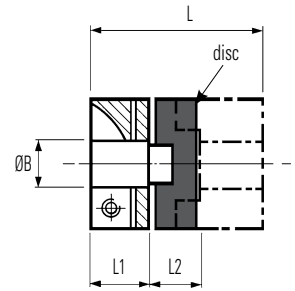
Set screw style



Clamp style



Refs. 450
Set screw style



Refs. 452
Clamp style

DIMENSIONS & ORDER CODES

Coupling Type and Size	Hub Ref		Dimensions								Fasteners			Disc Ref	
	Set Screw Style	Clamp Style	ØD mm	L mm	① L1 mm	② L2 mm	ØB1 Max mm	④ Moment of Inertia kgm ² x10 ⁻⁸	④ Mass kg x10 ⁻³	Size	③ Torque Nm	Wrench mm	Acetal (black) Std.	Nylon 11 (Natural)	
Thro' Hubs	13	450H13	-	12.7	15.9	5.5	1.7	6.35	20	10	M3	0.9	1.5	236.13	238.13
	19	450H19	-	19.1	26.0	9.4	7.2	8	59	13	M4	2.2	2.0	236.19	238.19
		-	452H19								M2.5	1.3	2.0		
	25	450H25	-	25.4	32.4	11.6	9.2	12	252	31	M5	4.6	2.5	236.25	238.25
		-	452H25								M3	2.4	2.5		
	33	450H33	-	33.3	42.0	15.0	12.0	16	1080	67	M6	7.6	3.0	836.33	838.33
		-	452H33								M4	5.6	3.0		
	41	450H41	-	41.3	50.8	17.8	15.3	20	3177	142	M6	7.6	3.0	236.41	238.41
-		452H41	M4								5.6	3.0			
50	450H50	-	50.0	59.6	20.6	18.4	25.4	7550	208	M8	18.3	4.0	236.50	-	
	-	452H50								M5	11.4	4.0			
57	450H57	-	57.1	78.0	28.4	21.2	30	12410	361	M8	18.3	4.0	236.57	-	
	-	452H57								M6	19.3	5.0			

PERFORMANCE (AT 20°C WITH STANDARD ACETAL DISC)

Coupling Size	⑤ Peak torque Nm	⑥ Max compensation @ 3000 rpm			⑦ Torsional		Static break torque Nm
		Angular deg	Radial mm	Axial ± mm	Rate deg / Nm	Stiffness Nm / rad	
13	0.5	0.5	0.1	0.05	0.88	65	4
19	1.7		0.2	0.1	0.50	115	8
25	4		0.2	0.1	0.28	205	13
33	9		0.2	0.15	0.093	615	53
41	17		0.25	0.15	0.048	1200	57
50	30		0.25	0.2	0.042	1375	95
57	44		0.25	0.2	0.022	2610	150

Materials Finishes

Hub sizes 13 to 57 : Al Alloy 2014A T6 or 6026 LF

Fasteners: Alloy steel, black oiled

Hubs: Clear anodised finish

IMPORTANT

Load capacity depends on application conditions:
see page 4 for details

STANDARD BORES® FOR ALL TYPES

Coupling Size	ØB1, ØB2 +0.03mm/-0mm (+0.0012/ -0)																							
	2	3	(1/8")	4	(3/16")	5	6	(1/4")	8	(3/8")	10	12	(1/2")	14	15	(5/8")	16	18	19	(3/4")	20	24	25	30
13		•	•	•	•	•	•	•																
19				•	•	•	•	•																
25						•	•	•	•	•	•													
33							•	•	•	•	•	•	•	•	•	•	•							
41								•	•	•	•	•	•	•	•	•	•	•	•	•	•	•	•	•
50									•	•	•	•	•	•	•	•	•	•	•	•	•	•	•	•
57										•	•	•	•	•	•	•	•	•	•	•	•	•	•	•
Bore ref.	11	14	16	18	19	20	22	24	28	31	32	35	36	38	40	41	42	45	46	47	48	51	52	56